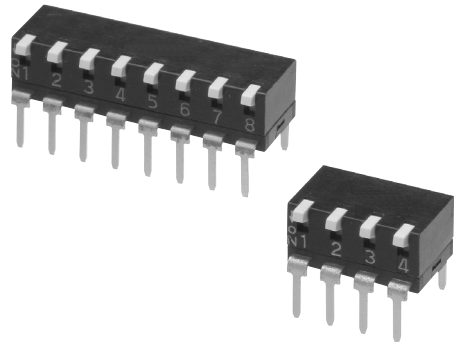


### Low-profile Piano DIP Switches with a Standard Pitch of 2.54 mm for Continuous Mounting.

- Low-profile design with a height of only 5 mm and a 2.54-mm pitch for continuous mounting.
- Models available with 2, 4, 6, 8, or 10 poles.
- Gold-plated twin contacts with slide-type self-cleaning mechanism for high reliability.



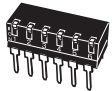
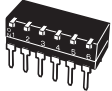
RoHS Compliant

#### Application

Mode setting of MPU  
Modem  
Controller of servo motor  
Coin changer  
Program controller

## Ordering Information

### ■List of Models

Type (color of actuator)		Short actuator (white)	Long actuator (white)
No. of poles	Quantity per tube		
2	95	<b>A6TR-2101</b>	<b>A6TR-2104</b>
4	47	<b>A6TR-4101</b>	<b>A6TR-4104</b>
6	31	<b>A6TR-6101</b>	<b>A6TR-6104</b>
8	23	<b>A6TR-8101</b>	<b>A6TR-8104</b>
10	18	<b>A6TR-0101</b>	<b>A6TR-0104</b>

**Note:** Orders must be made in integral multiples of the quantities given for each tube. Switches are not sold individually.

## Specifications

### ■Ratings/Characteristics

<b>Rating</b>	25 mA at 24 VDC, 10 $\mu$ A (minimum current) at 3.5 VDC
<b>Ambient operating temperature</b>	-20 to 70°C at 60% max. (with no icing or condensation)
<b>Ambient operating humidity</b>	35% to 95% (at 5 to 35°C)
<b>Insulation resistance</b>	100 M $\Omega$ min. (at 250 VDC)
<b>Contact resistance</b>	200 m $\Omega$ max. (initial value)
<b>Dielectric strength</b>	500 VAC for 1 min between terminals
<b>Vibration resistance</b>	Malfunction: 10 to 55 Hz, 1.5-mm double amplitude
<b>Shock resistance</b>	Malfunction: 300 m/s <sup>2</sup> min.
<b>Durability</b>	Electrical: 1,000 operations min.
<b>Operating force</b>	0.29 to 7.8 N {30 to 795 gf}
<b>Weight</b>	0.25 g (2 poles), 0.50 g (4 poles), 0.76 g (6 poles), 1.02 g (8 poles), 1.28 g (10 poles)

# Dimensions

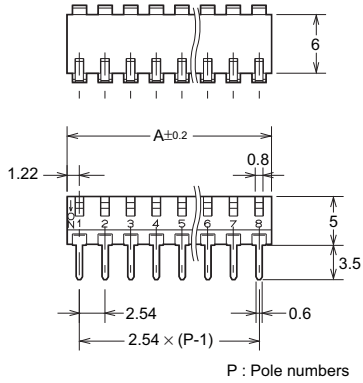
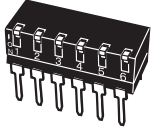
- Note:** 1. All units are in millimeters unless otherwise indicated.  
 2. Unless otherwise specified, a tolerance of  $\pm 0.4$  mm applies to all dimensions.

● **Through hole terminal**

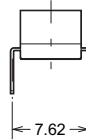
**Short actuator / Long actuator**

A6TR-□101

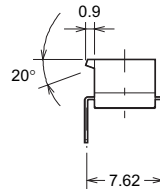
A6TR-□104



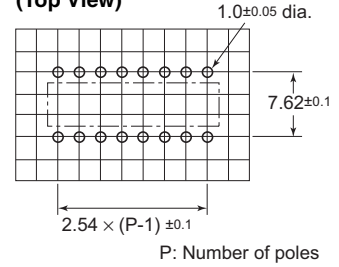
**Short actuator**



**Long actuator**



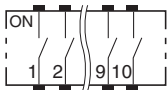
**PCB Dimentions (Top View)**



No. of poles	Model		Dimension A
	Short lever	Long lever	
2	A6TR-2101	A6TR-2104	4.98
4	A6TR-4101	A6TR-4104	10.06
6	A6TR-6101	A6TR-6104	15.14
8	A6TR-8101	A6TR-8104	20.22
10	A6TR-0101	A6TR-0104	25.30

# Internal Connections

■ **Contact Form (Top View)**



# Precautions

Be sure to read the Safety precautions common to all DIP Switches for correct use.

ALL DIMENSIONS SHOWN ARE IN MILLIMETERS.  
 To convert millimeters into inches, multiply by 0.03937. To convert grams into ounces, multiply by 0.03527.